

Welcome to Ronald Tree Nursery School



A booklet all about our provision in the Elmer and the Gruffalo rooms

Please read this leaflet carefully.

If you have any questions please telephone the office on 01536-514240.





How to contact us

Phone: 01536 514240

Email: finance@ronaldtreenursery.co.uk

Website: www.ronaldtreenursery.co.uk

Ronald Tree Nursery School

Laburnum Crescent

KETTERING

NN16 9PH

Safeguarding

Everyone at Ronald Tree is committed to keeping every child safe. If we have any concerns we will share them with parents/ carers as soon as possible. We are obliged to pass on information and involve relevant services if we believe a child is at risk of harm.

If you have any concerns about a child please ask to speak to

Deb Thwaites, Christine Whitney, or Jill Cadman



When is the Nursery open?

Monday to Friday 8am to 4.30pm

Term dates are on the back of this leaflet.

Please be on time when dropping off and collecting your child as children get upset if they see others arriving or leaving at different times.

You must let us know in advance if someone different is collecting your child. Please ring on **01536-514240** if this is a last minute decision.

Attendance

Nursery places are in great demand so please use your place well. To enable your child to get the most from what the nursery offers it is important to come regularly.

However if your child is unwell please do keep them at home until they are better.

If your child has **sickness or diarrhoea** please keep them at home for 48 hours after the last bout, as this spreads very quickly with young children.

If your child, or someone in your family displays any of the symptoms of **COVID 19**, please call the nursery immediately and follow current Government guidelines.

If your child is absent from nursery for *any* reason, please let us know on 01536-514240. Thank you.

If you wish to take your child on holiday during term time you must let the nursery know by completing an absence form. Please note this may affect your entitlement to funding from the local authority and may result in a charge.

Our Ronald Tree Family—Gruffalo and Elmer Rooms



Deb Thwaites, Headteacher



Jackie Wilson Blue/Purple Gp



Liz Jones, Green Group AM



Carol Walding, Green Gp PM



Lisa Clark, Orange Group



Mel Perkins, Red Group

All our nursery staff are qualified to a minimum of NVQ Level 3 and a ratio of one adult to every 13 children (3 & 4 Year Olds) and one adult to every four children (2 year olds) is maintained at all times. If you have any questions at any time please speak to your child's key worker.



Sarah Towell, Yellow Group



Jill Cadman, EY Assistant



Carolyn Carter EY Assistant



Addie Holmes, Cleaner



Claire Seddon, Finance



Mandy Coles, Administration

Our Ronald Tree Family—Gruffalo and Elmer Rooms

Remember to follow us on Facebook for up to the minute news and information!

Our Ethos and Curriculum

Here at Ronald Tree, we firmly believe children learn best through play. . . They need to investigate the world around them, laugh alongside their peers and feel safe in the care of our team.

INTENT

Warm and welcoming setting

EYFS Curriculum as our guide

Playful, engaged learners

Language development a priority

Aim high for *all* of our children

Year round access to the great outdoors

IMPLEMENTATION

Listen to the voice of the child

Enabling environment for child led learning

Adult interactions model language and behaviour

Routines and consistency support a sense of belonging

Next steps are addressed in the moment

Adults set learning invitations to ignite curiosity

Nurture the unique child

Develop trusting relationships with our families

IMPACT

Good levels of attainment and progress shown in data snapshots

Resilient, confident learners who are ready for what's next

Observations build a picture of the whole child

Well-being and Involvement levels are high

At Ronald Tree Nursery: We play, learn and grow!

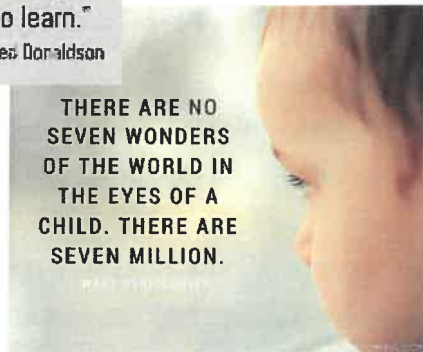


"Children learn as they play.
More importantly, in play,
children learn how to learn."

-D. Fred Donaldson



Kids
don't
remember
their
best day of
television.



THERE ARE NO
SEVEN WONDERS
OF THE WORLD IN
THE EYES OF A
CHILD. THERE ARE
SEVEN MILLION.



Play is the work of
childhood.



"Play is the highest form
of research."

~Albert Einstein

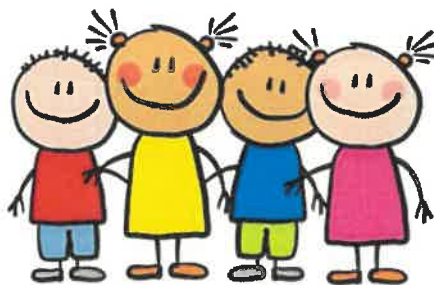
What do I need to bring with my child?

We play outside every single day. Please make sure your child arrives in a suitable coat for the weather.

A drawstring bag will be provided for you to keep the following items in at nursery:

- A full set of spare clothes at all times. All items **to be marked with your child's name**.
- Warm hat in winter & a sun hat in summer.
- *If your child is not yet potty trained:* make sure there are 2 nappies, suitable wipes and nappy bags in your child's bag each day. **We do not supply these items.**

Please send your child in clothes that are easy for them to fasten themselves, e.g. jogging bottoms and Velcro shoes rather than jeans and lace up shoes. No open toed sandals. Your child **WILL** get dirty! Please do not send your child in their best clothes.



Funded Entitlements and Additional Hours

All parents are entitled to 570 hours each year from the term after their child's third birthday. This is available as 15 hours each week during term time at Ronald Tree Nursery School, as either a morning or an afternoon place, Monday to Friday.

Where we have capacity, parents of 15 hours funded three and four year olds may buy additional hours beyond these session times. This includes:

- Breakfast club (8am to 8.30am breakfast included) currently £3.00 per day;
- Lunch club (11.30 to 12.30 please provide a packed lunch) currently £5.00 per day; or
- Afterschool club to 4pm currently £2.50 or to 4.30pm currently £5.00 per day.

Where parents meet the government criteria, and where we have capacity, children may attend for 1140 hours each year/30 hours each week during term time. We offer a number of flexible options for parents e.g. :

- 4 Days e.g. 8.00am to 3.30pm or 8.30 to 4.00pm
- 2 Days 8am to 3.30pm plus 3 mornings 8am to 1pm.

If parents would like their child to attend for more than 30 hours per week, the additional hours are charged at a flat rate (currently £5/hour).

Please note that if your child has attended another nursery or childminder and you have claimed your entitlement over the full year rather than in term time only, this will affect the number of funded hours you can claim at Ronald Tree Nursery School. Please let us know if this is the case.

You can check whether you are eligible for 2 year old or 30 hours funding by visiting www.childcarechoices.gov.uk . You can also use this website to register for tax free childcare payments, which we accept.

Please speak to Mandy or Claire via Reception for more information on any of the above.



What will my child be learning?

We follow the Early Years Foundation Stage. This is split into 7 areas of learning and development:

Communication and Language

Personal, Social and Emotional development

Physical development

Literacy

Mathematics

Understanding the world

Expressive arts and design

We don't create lots of written plans each week. Every child is unique and following their own path. Instead, we ensure our environment is open and accessible. We observe your child at play and plan 'in the moment' by recognising your child's interests, identifying the teaching point within that and working with your child to deepen their understanding. Children are encouraged to learn new skills through purposeful self-chosen activities and free play.

Towards the end of the session we have group time where your child will work with their key worker and the rest of their group. These sessions may include stories, discussions, music, games etc.

We make observations of the all children throughout the year and make assessments about their individual progress. The observations are recorded on **Tapestry** (online version of your child's learning journey). Parents have a password to enable them to view their own child's progress only. Parents can also put their own photos to share with us. We aim to work together to build a picture of your child and help them to feel part of the Ronald Tree Family.

Term Dates 2021-2022

1st & 2nd September	Staff Training Days
2nd & 3rd September	Home Visits
6th & 8th September	Returning Children
8th to 10th September	Stay and Play Sessions
22nd October	Training Day
25th to 29th October	Half Term Holiday
20th December to 3rd January	Christmas holiday
4th January 2022	Training Day
5th January 2022	Term begins
14th to 18th February	Half Term Holiday
4th to 18th April	Easter holiday
19th April	Term Begins
2nd May	Bank Holiday
30th May to 3rd June	Half Term Holiday
21st July	End of Term
22nd July	Training Day

Consumables

We ask all parents for £2.50 per week to cover the cost of the food your child receives as snack and some consumable resources. Where children attend for 30 hours we ask for £5 each week. Any surplus money is put towards treats for the children at Christmas, Easter and end of the year. Please put the money in an envelope with your child's name and the amount clearly marked on the outside and hand in on a Monday to the person on the door greeting your child. We are happy to receive money weekly, monthly or termly. Thank you.